

International College of Manitoba

International Student Guide 2024/25



There are so many reasons why the International College of Manitoba (ICM) continually attracts students from around the world as they embark on a journey to a degree in Canada. It's a pathway toward one of Canada's leading universities; it's the additional personal and academic coaching to help you succeed in your studies — and it's so much more!



**FIND OUT WHY
STUDYING WITH ICM IS
THE SMARTER MOVE.**

MEET OUR STUDENTS

Ask us about what life at ICM is like!

Message with our current students to learn firsthand about their experience studying at ICM and living in Winnipeg.



**[icmanitoba.ca/
meet-our-students](https://icmanitoba.ca/meet-our-students)**





**WINNIPEG IS LISTED AS ONE OF TIME
MAGAZINE'S WORLD'S GREATEST PLACES!**

Winnipeg was named one of 100 extraordinary destinations to explore for its exciting cultural and entertainment offerings.



SEE WHAT LIFE IN WINNIPEG IS LIKE!

Watch this video from Economic Development Winnipeg to experience the city for yourself.

It all starts in **Winnipeg**

Choosing to live and study in Winnipeg is a smart move. Living here means thriving here: Calling Winnipeg home allows you to enjoy a big-city lifestyle in an affordable way.

Located in the heart of Canada, the multi-cultural city continues to experience steady economic growth, high employment, and low living costs.

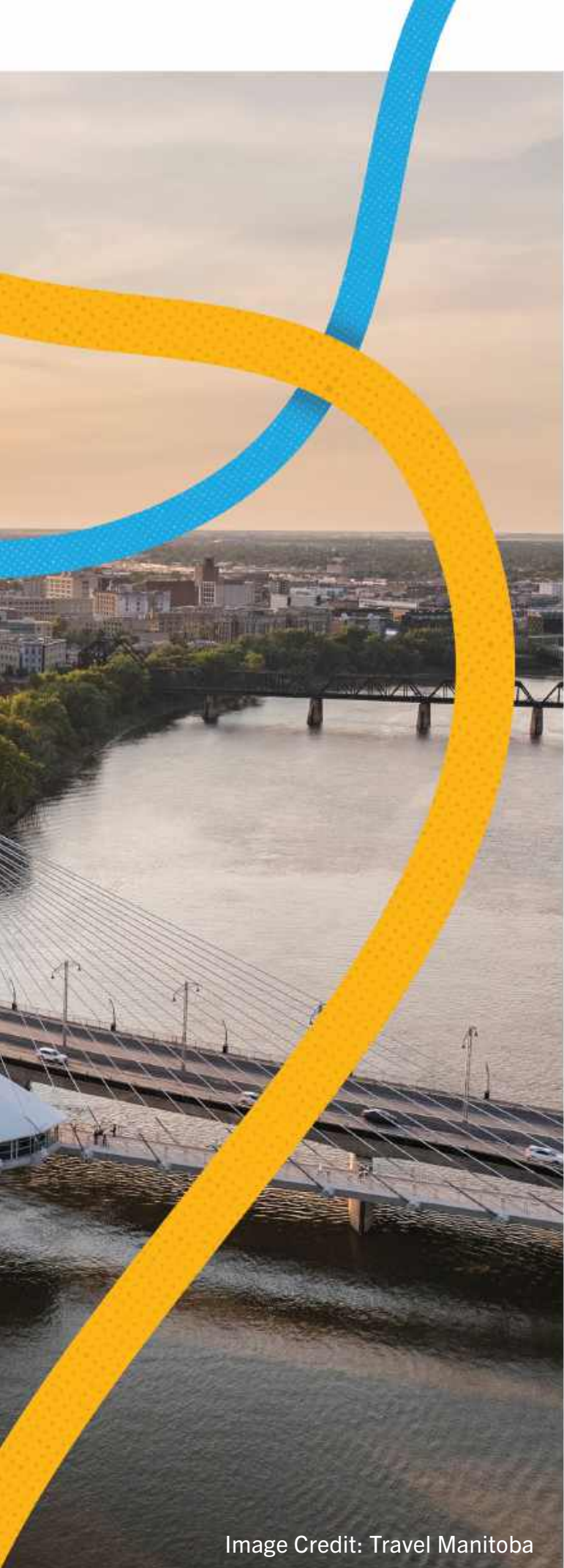


Image Credit: Travel Manitoba

Winnipeg is one of the most livable cities in Canada

The Globe and Mail, a major Canadian publication, ranked the best cities to live in across Canada, and Winnipeg was a big winner! The city was named the third most livable in the country and one of the best for young professionals, newcomers, entrepreneurs, and raising a family.



3rd most livable city in Canada

The Globe and Mail, 2023



910,000+ people

Statistics Canada, 2024



100+ ethnic groups



80+ languages spoken



130+ days of festivals



Make the Smarter Move

YOUR FUTURE BEGINS IN WINNIPEG, MANITOBA — THE HEARTBEAT OF CANADA.

Your journey to a degree officially starts with the International College of Manitoba. Our programs and teaching approach prepare students for university studies while ensuring a smooth and successful transition to the University of Manitoba (UM), where you will earn an internationally recognized degree.



Earning an internationally recognized degree from a **top-15 Canadian university** has never been more within your reach

With some of the lowest tuition costs in the country, coupled with Manitoba's high affordability and strong employment market, UM graduates find themselves thriving in their career of choice faster than others.

The value is real. Studying with the International College of Manitoba is the smarter move.

**INTERNATIONAL YEAR ONE
(UTP STAGE II)**
(EQUIVALENT TO THE FIRST YEAR OF A UM
BACHELOR'S DEGREE)

\$ 21,414

University of Alberta

\$31,895 - \$31,895*

University of British Columbia

\$41,595 - \$44,942*

University of Toronto

\$43,620 - \$62,580*

* Full-time, International student tuition fees in an arts and humanities program for 2023-24 (via Statistics Canada)

Step into a brighter future with ICM

It's no secret why students from across the globe continue to choose ICM as their starting point toward earning a degree in Canada. ICM checks all the boxes. The value. The affordability. The results. However, what makes ICM a preferred destination for so many is the intangibles.

Some will say it's the constant, one-on-one support from faculty and staff. Others smile when they think of the life-long friendships formed with fellow students through chats in between classes or fun nights out in the city belting out karaoke tunes. It's the sense of pride and confidence students develop through their studies and connections that have them meeting life's opportunities with drive and success.



96%

of students satisfied with the quality of the program, teaching and learning opportunities

95%

satisfied with the quality of customer service



93%

satisfied with the quality of support services

91%

satisfied with the college environment

ICM Student Satisfaction Survey, 2023



"I chose to study at ICM and the University of Manitoba because it has a friendly and welcoming community. As an international student, that's really important to me. I like the fact that there's a place for everyone."

- Tjidzani, ICM Alumni (Zimbabwe)



SCAN THIS CODE TO WATCH TJDZANI'S TESTIMONIAL.

Here's how it works

FOUNDATION (UTP STAGE I)

Foundation (UTP Stage I) is an eight-month program designed as a bridge between secondary school and university-level study. Successful completion of the program with the necessary grades assures you entry to ICM International Year One (UTP Stage II).

INTERNATIONAL YEAR ONE (UTP STAGE II)

International Year One (UTP Stage II) is the equivalent of the first year of a University of Manitoba bachelor's degree program and can be completed in three academic terms.

Upon successful completion of International Year One (UTP Stage II), if you satisfy university admission requirements and deadlines and achieve the specified minimum GPA for admission, you'll be eligible to apply for transfer and progress to the second year of your degree at the University of Manitoba. Admission to some degree programs will be on a competitive basis and subject to quotas. Meeting the minimum GPA does not guarantee admission.

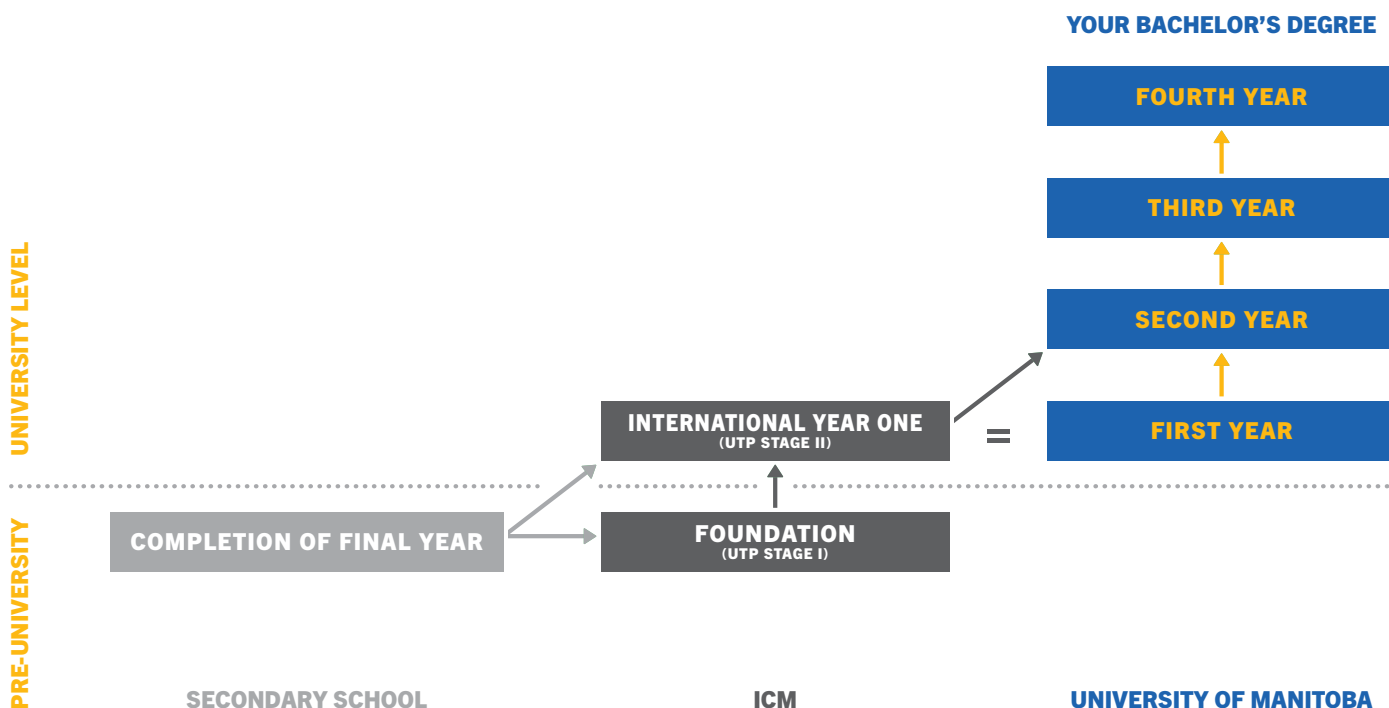
Students who meet the International Year One (UTP Stage II) completion requirements but who do not meet the admissions requirements and competitive GPA of some degree programs will be eligible to apply to either the Faculty of Arts or the Faculty of Science, subject to UM's admissions regulations.



At ICM, our focus is to help you make the most of the opportunities available to you. In choosing an ICM program, you can follow thousands of other successful students who have achieved their ambitions by joining the University of Manitoba, which is widely recognized as one of the most creative and influential universities in Canada.

Take the first step towards achieving your goals with ICM. We look forward to welcoming and supporting you on your journey to the University of Manitoba.

Robert Daudet
College Director and Principal



Your pathway to UM

The internationally accredited programs and award-winning researchers and instructors at the University of Manitoba have a world-class reputation.

With tuition fees lower than many other Canadian universities and an affordable city to call home, University of Manitoba students enjoy a high-quality education at a very reasonable cost.

Did you know you can tour your future UM campus from the comfort of your home?

The Virtual 360° Tour is available online! This new, self-service virtual tour allows anyone to explore select areas of the Fort Garry campus and accommodations from a computer or mobile device from anywhere in the world using 360° photography similar to Google Street View. The new virtual tour also features videos, photo slideshows, area descriptions and an interactive map.



**EXPLORE CAMPUS WITH
UM'S 360 VIRTUAL TOUR**

150+

student groups and clubs.

100+

opportunities available for engaged learning through internships, co-ops and exchange programs.



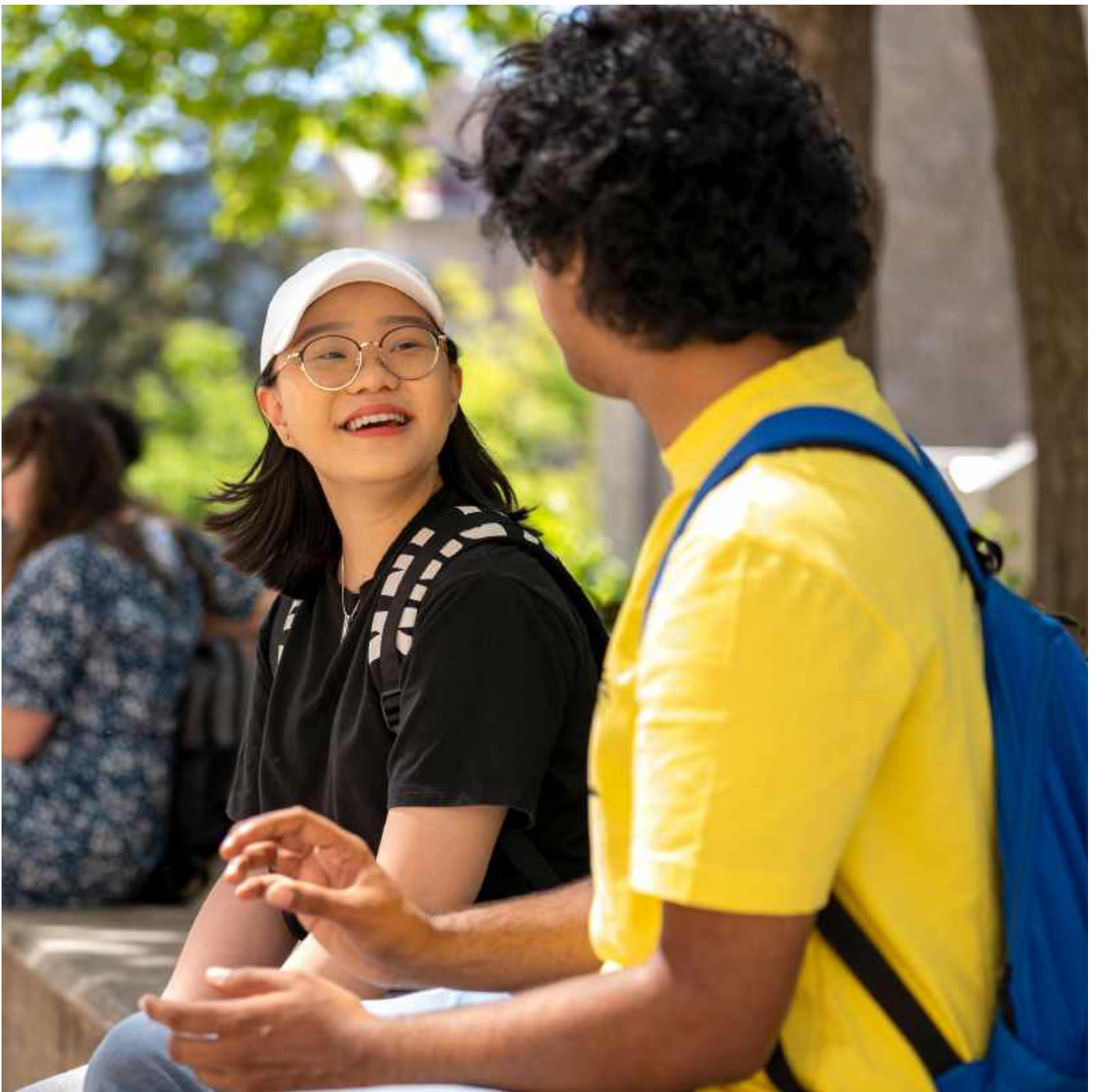


Undergraduate program list

Upon completing International Year One (UTP Stage II) at ICM, you will have the opportunity to apply to a second year in a variety of UM faculties and, from there, choose your specific major. Please see the University of Manitoba Applicant Information Bulletin for advanced entry for information on how to apply to second-year studies in your specific program.

For details, please go to:

umanitoba.ca/explore/undergraduate-admissions/requirements



FACULTY OF AGRICULTURAL AND FOOD SCIENCES

Help nourish the world without costing the Earth by developing sustainable agricultural practices, exploring renewable bio-resources and working to make our food safer and healthier.

umanitoba.ca/afs

Available majors

- Agribusiness •
- Agriculture: •
 - Agronomy, Animal Systems, Plant Biotechnology
- Agroecology •
- Entomology •
- Food Science •
- Human Nutritional Sciences •
- Soil Science •

FACULTY OF ARTS

Acquire the oral and written communication skills, research abilities and critical thinking skills that are highly sought after by today's employers in a variety of fields.

umanitoba.ca/arts

Available majors

- Anthropology •
- Art History
- Asian Studies
- Canadian Studies
- Catholic Studies •
- Central and East European Studies •
- Classics:
 - Classical Studies, Greek, Latin
- Economics:
 - Economics, Economics and Econometrics Stream •, Economics and Society Stream •, Economics-Mathematics, Economics-Statistics
- English, Theatre, Film & Media:
 - English, Film Studies, Theatre
- French, Spanish, and Italian:
 - French, Spanish, Italian •, Italian Studies
- German and Slavic Studies:
 - German •, Polish •, Russian, Ukrainian
- Global Political Economy
- History •
- Icelandic Language and Literature
- Indigenous Studies
 - Indigenous Studies, Indigenous Governance Stream (with a required minor in Business), Indigenous Languages (Cree, Anishinaabemowin [Ojibwe])
- Judaic Studies •
- Labour Studies •
- Latin American Studies •
- Linguistics •
- Mathematics
- Medieval and Early Modern Studies
- Philosophy
- Political Studies •
- Psychology •
- Religion
- Sociology and Criminology
 - Sociology, Criminology
- Ukrainian Canadian Heritage Studies
- Women's and Gender Studies

ASPER SCHOOL OF BUSINESS

Gain the experience, leadership skills and networking opportunities you need to succeed in Business from the internationally accredited business school.

umanitoba.ca/asper

Available majors

- Accounting •
- Actuarial Mathematics •
- Business Analytics •
- Entrepreneurship and Innovation •
- Finance •
- Generalist •
- Human Resource Management/Industrial Relations •
- Indigenous Business Studies •
- Marketing •
- Strategy and Global Management •
- Supply Chain Management and Logistics •

PRICE FACULTY OF ENGINEERING

Foster your scientific and mathematical knowledge by using creativity and technology to develop solutions to societal problems and help support the world around you.

umanitoba.ca/engineering

Available majors

- Biosystems Engineering •
- Civil Engineering •
- Computer Engineering •
- Electrical Engineering •
- Mechanical Engineering (Aerospace option) •

CLAYTON H. RIDDELL FACULTY OF ENVIRONMENT, EARTH, AND RESOURCES

Tackle environmental issues that challenge the future of our planet in the only faculty in Canada that brings together experts from a variety of disciplines to offer multiple perspectives of the Earth.

umanitoba.ca/environment

Available majors

- Earth Sciences:
 - Geology, Geophysics
- Environmental Science •
- Environmental Studies •
- Geography
- Physical Geography •

RECREATION MANAGEMENT AND COMMUNITY DEVELOPMENT

Build healthy and vibrant communities by gaining knowledge and practical experience in community development, sport and event management, sustainable tourism and environmental management.

bit.ly/umanitoba-brmcd

Available program

- Recreation Management and Community Development

FACULTY OF SCIENCE

Discover the unknown and invent the future with the widest variety of science programs in the province, opportunities to experience research alongside world-renowned scientists and the largest co-op work placement program in the province.

umanitoba.ca/science

Available majors

- Actuarial Mathematics
- Biochemistry •
- Biological Sciences: •
 - Cell, Molecular and Developmental Biology, Ecology and Environmental Biology, Environmental and Integrative Physiology, Evolution and Biodiversity, Integrative Biology
- Chemistry •
- Computer Science: •
 - Computer Science-Mathematics Joint Program, Computer Science-Physics and Astronomy Joint Program, Computer Science-Statistics Joint Program
- Data Science •
- Genetics •
- Mathematics: •
 - Applied Mathematics (Computer Science Option, Economics Option, Statistics Option), Mathematics-Economics Joint Program, Mathematics-Physics and Astronomy Joint Program
- Microbiology •
- Physics and Astronomy: •
 - Astronomy and Astrophysics, Physics, Biological and Medical Physics
- Psychology •
- Statistics: •
 - Statistics-Actuarial Mathematics Joint Program, Statistics-Economics Joint Program, Statistics-Mathematics Joint Program

- Minor option only
- Cooperative education option available

Let UM launch your global career

Enhance your student experience, build your skills and develop your co-curricular record by getting involved outside the classroom. UM offers career consultants, workshops, career fairs, career mentors and a variety of experiential learning opportunities so students can develop their networks and prepare for their careers.

PRACTICAL PAID WORK EXPERIENCE

Following ICM completion, you may be eligible to take part in a Co-operative Education (Co-op) Program as a UM student. Co-ops combine classroom knowledge with practical paid work experience to further enhance your skills — and have you career-ready when you hit the job market.

Students who participate in a Co-op program develop networks and career opportunities that help them find jobs quickly and receive higher salaries than students who graduate without such a program.

Top employers in Winnipeg include:



98%

of Business Co-op grads are employed full-time within three months of graduation

Asper School of Business Employment Report, 2022

\$18.50 - \$29/hrs

for Computer Science Co-op students

University of Manitoba, 2024



“As a business student, I believe the Asper School of Business Co-op Program greatly influences my academic path. The program facilitates student connections with companies relevant to their major, providing hands-on experiences while still in school. Through the Co-op, I get a chance to explore my potential career paths, bridge the divide between academics and professional work, and grow my network with people in the industry. Ultimately, I see this as a huge advantage for students upon graduation, as it equips them with practical skills and experiences that enhance their contribution to the company and support their personal growth.”

- Tra, ICM Alumni (Vietnam)

Supporting your success

Making the move to study at a university in a new country is a big life decision. ICM will support you on your journey every step of the way! We have a wide range of support services and programs to help you maximize your academic potential while helping you feel comfortable and at ease as you transition to life in Canada.



1



EXPLORATION & ADMISSION:

This stage involves exploring different course options and initiating the admission process to the college.

2



SOURCE COUNTRY OFFICE SUPPORT:

Students receive assistance and guidance from country-specific offices or consultancy services to navigate the admission process effectively.



6



ENHANCED LEARNING ENVIRONMENT:

Study in smaller classrooms with extended instruction times. With approx. 30-35 students per class, you'll have better access to your instructors and more meaningful interactions with your classmates.

8



ADVISING:

Students receive regular communication through emails and have the opportunity for in-person or online appointments.

Weekly group advising sessions are conducted to provide additional support.

7



INTEGRATED LEARNING SKILLS (ILS):

Training and support are provided to help students develop essential learning skills necessary for academic success.

10



STUDENT LEADERSHIP OPPORTUNITIES:

Students can engage in leadership roles such as Peer Advisors, Peer Educators, Cultural Ambassadors, and Marketing Influencers or join the Social Committee.

9



WELLNESS WORKSHOPS:

Various workshops are conducted to raise awareness about safety, mental health, housing rights, financial planning, and adjusting to life in Winnipeg.

11



SOCIAL EVENTS & CULTURAL CELEBRATIONS:

Events are organized to facilitate social connections among students and celebrate cultural diversity within the college community.

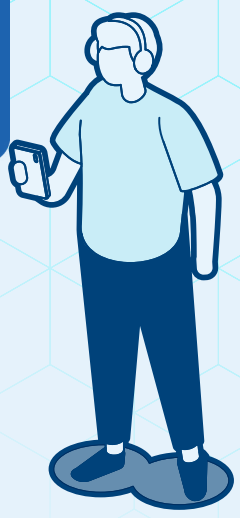
3

PRE-ARRIVAL:

Housing arrangements can be made to ensure students have accommodation upon arrival.

Assistance is provided in planning their academic program.

Essential information regarding arrival procedures is communicated to students.



5

ORIENTATION:

New students are introduced to campus life, services, and resources available to them.



4

PRE-ARRIVAL SUCCESS STRATEGIES (PASS):

Students are prepared for a smooth transition to college life through various strategies aimed at their success.

12

ACADEMIC RESOURCES:

Faculty presentations, program-specific emails, and the involvement of advisors from the Faculty of Science provide academic support to students.

13

SCHOLARSHIP OPPORTUNITIES:

Various scholarships are available to recognize academic excellence and community engagement among students.

14

VISA/IMMIGRATION SUPPORTS:

Assistance is provided to students with visa and immigration processes, ensuring legal compliance.



16

ALUMNI NETWORK:

Students are invited to join the Alumni Network, which offers mentorship opportunities, networking events, and employment opportunities with ICM.

15

TRANSITION RESOURCES:

Workshops and modules are conducted by the International Centre to assist students in smoothly transitioning to year two at UM.

Academic entry requirements

We're excited for you to start your journey with us. Visit icmanitoba.ca/admissions/admission-requirements for your country's academic entry requirements.

English language requirements

The language instruction at ICM is English. Before enrolling in an ICM program, you must demonstrate a suitable level of English proficiency.

How do you confirm your eligibility? Visit our website: icmanitoba.ca/english-language-requirements

Conditional admission with ELC

If you don't meet the minimum English language requirements for your desired ICM program, you may choose to enroll in UM's English Language Centre (ELC) Intensive Academic English Program (IAEP) to improve your academic English language proficiency. IAEP is the only English language program that will gain you conditional admission to ICM with no additional English language test required.

Visit ELC's website: umanitoba.ca/iaep

FOUNDATION (UTP STAGE I)

Entry into Foundation (UTP Stage I) generally requires the successful completion of Year 11 of secondary school or its equivalent*, depending on your country of study.

INTERNATIONAL YEAR ONE (UTP STAGE II)

Entry into International Year One (UTP Stage II) generally requires the successful completion of Year 12 of secondary school or its equivalent with overall and individual subject requirements, depending on your program.* Admissions assessments are based on an applicant's complete academic record.

DIRECT ENTRY

If you meet the direct entry English language requirements and the relevant academic requirements for your country, you can be eligible* for direct entry to Foundation (UTP Stage I) or International Year One (UTP Stage II).

MIXED ENTRY

If you meet the mixed entry English language requirements and the relevant academic requirements for your country, you'll commence Foundation (UTP Stage I) or International Year One (UTP Stage II) with the addition of one academic English course to be taken during the first term of study.

ELC'S INTENSIVE ACADEMIC ENGLISH PROGRAM

The University of Manitoba's English Language Centre (ELC) offers the Intensive Academic English Program (IAEP) and provides English language training for university-bound international students. The IAEP prepares you for university studies by providing you with opportunities to develop and strengthen the language and academic skills necessary to succeed in degree programming. Each level consists of 24 hours of instruction per week for 14 weeks. Depending on your initial placement level, the IAEP can take as little as one level to complete.

- January, May and September start dates
- The average class size is less than 12 students per class
- Highly qualified and experienced instructors
- Classes are held on the Fort Garry campus, so you can enjoy the experience of studying English while having access to all university facilities. Remote delivery and hybrid options are also available.
- ICM staff can assist you with the application process.

**Meeting minimum English and academic requirements does not guarantee admission. This information is a guide only and is subject to change without notice.*

Scholarships and bursaries

A big reason why studying at ICM is the smarter move is our affordable tuition fees. Combined with Manitoba’s low cost of living, you couldn’t ask for a better advantage in pursuing a degree and a fulfilling career.

Check the website for entrance scholarships that may be available for your intake! We also offer a number of different scholarships to our current students each term, as well as the Navitas Family Bursary. Information can be found on our website: icmanitoba.ca/scholarships



Academic calendar

Year	Intake	Term start	Term end
2024	Fall (September)	August 29, 2024	December 14, 2024
2025	Winter (January)	January 3, 2025	April 17, 2025
2025	Summer (May)	May 1, 2025	August 15, 2025
2025	Fall (September)	September 4, 2025	December 18, 2025
2026	Winter (January)	January 8, 2026	April 24, 2026

Dates are current at the time of printing but are subject to change without notice.

icmanitoba.ca/important-dates

Your investment

ICM FEES AND CHARGES FOR THE 2024/2025 ACADEMIC YEAR

Program	Normal duration	Total program fees
English language program		
Mixed program (English component only)	1 term	C\$6,494
Pre-university level program		
Foundation (UTP Stage I)	2 terms	C\$20,378
University level programs		
International Year One (UTP Stage II)	3 terms	C\$21,414*

* International Year One (UTP Stage II) program fees are based on 30 credits of study at C\$713.80 per credit. Students taking more than 30 credits of study will need to pay additional fees as well as lab fees. Fees and charges are listed in Canadian dollars (C\$) and are subject to change without notice. Actual tuition costs may vary, depending on your choice of courses.

YOUR LIVING EXPENSES

In addition to your tuition fees, you will need approximately C\$15,000-\$17,000 to meet your living expenses each year.

This is based on a student living in a homestay for one year and includes accommodation, food, utilities, transport, textbooks, recreation and entertainment. These costs will vary according to your individual requirements and lifestyle and do not include major expenses such as buying a laptop, furniture, winter clothing, or other large, one-time expenses.

As part of the study permit application, students will also need to demonstrate financial sufficiency by showing proof of funds for living costs, first year tuition, and travel. For more details, visit canada.ca/en/immigration-refugees-citizenship.

PROGRAM FEES INCLUDE:

- full tuition*
- orientation program
- student success advising
- study skills workshops
- support tutorials

icmanitoba.ca/fees

ADDITIONAL FEES

Fee	Amount	Frequency
Application fee	C\$125**	
Student services fee (compulsory)	C\$117	Per term
Sport and recreation membership (compulsory)	C\$281	Per year
Medical insurance/International Student Support program (compulsory)	C\$1,449	Per year
Foundation (UTP Stage I) prerequisite course including Foundation (UTPI) math	C\$2,548	Per course, if required
Foundation (UTP Stage I) e-textbooks (Foundation courses only)	C\$99	Per course

Fees and charges are listed in Canadian dollars (C\$) and are subject to change without notice. Actual costs may vary.

For the most up-to-date information regarding additional fees, please see icmanitoba.ca/fees.

***The application fee is non-refundable and will be applied towards tuition for students who successfully enrol at ICM and remain enrolled after week four of the first term.*

ESTIMATED TUITION AND FEES FOR YOUR UNIVERSITY OF MANITOBA DEGREE

Tuition fees are determined by the number and type of courses that you register for beginning in your second year at the University of Manitoba.

umanitoba.ca/admissions/undergraduate-admissions/tuition-estimates

How to apply

STEP 1



APPLY

Apply online today at icmanitoba.ca/apply and attach your academic transcripts, English language proficiency results (if required/available) and a copy of your passport's photo page.

STEP 2



RECEIVE YOUR LETTER OF OFFER (LOO)

Your Letter of Offer is important as it contains everything you need to know about your future studies. Please read it carefully and contact our team if you have any questions. To help you understand your LOO, visit icmanitoba.ca/admissions/understand-and-accept-your-offer.

STEP 3



ACCEPT YOUR OFFER

Sign your Acceptance of Offer Form and return it electronically. Your minimum deposit must also be paid to be recognized as having accepted your offer. Payments should be made directly to ICM.

If you have any outstanding conditions, plan to clear these as soon as possible. You should apply for accommodations as soon as you decide to accept your offer, too!

Once your payment has been received, you will receive your Letter of Acceptance, Provincial Attestation Letter (PAL), and payment receipt electronically.

STEP 4



APPLY FOR YOUR STUDY PERMIT

Collect the documents required to apply for a study permit right away and submit your application as early as possible to ensure your study permit is approved in time for Orientation.

STEP 5



ENROL IN COURSES AND ATTEND ORIENTATION

Once your conditions are cleared, you will be expected to enroll in your first term online approximately one month before your start date. ICM will email you with information about how to register. Be sure to check your registered email address frequently in the months leading to your intake.

Once enrolled, your next step is to attend the mandatory Orientation at the start of the term. We can't wait to welcome you to ICM!

Conditions of enrolment

1. For the purposes of this Fee Refund Policy, tuition, fees and charges are defined in terms of one full-time term of study (four courses) in any program at ICM.
2. Students may dispute ICM's decision regarding a refund by submitting a written request for reconsideration, together with details supporting their request, to the ICM College Director. This process does not restrict the student's right to pursue other legal remedies.
3. In cases of cancellation of enrollment or withdrawal from a program or course, the cancellation fee, administration charge, if relevant, and refund of tuition, fees, and charges are calculated as shown in the table below.
4. In cases of deferrals, the tuition, fees and charges paid by the student will be retained by ICM, without interest or penalty, until the student recommences their studies or withdraws from ICM.
5. If the student withdraws from ICM after having deferred, the Fee Refund Policy will apply as of the date ICM was advised of the student's deferral. The Fee Refund Policy will be applied as if the student started in the semester they deferred from and applied as of the date of that semester.
6. Where a Study Permit:
 - is refused to the student after enrolment; or
 - is not, for any reason, extended by Immigration, Refugees and Citizenship Canada;

ICM will charge the current term tuition and fees and a \$500 cancellation fee if the student is enrolled in courses and provided notice of study permit refusal subsequent to course drop with no financial penalty deadline.

If the student provides notice of study permit refusal prior to the course withdrawal with no financial penalty deadline, ICM will retain the cancellation fee set out in the table located on the ICM website under Conditions of Enrolment for 'study permit refusal' and refund the balance of the tuition, fees and charges paid by the student.

7. A student whose enrolment is terminated by ICM due to a breach of the terms and conditions of the contract between the student and ICM, including, without limitation, the rules, regulations and policies of ICM, will not be entitled to any refund of any tuition, fees and charges.
8. As set out elsewhere in these conditions of enrolment, ICM reserves the right to withdraw a program or course(s) from the offer. If, as a result, a student is unable to enrol in a similar program or course(s) at ICM and the student wishes to cancel their enrolment, all tuition, fees, and charges will be refunded, with the exception of a C\$500 administration fee.
9. The cancellation fee in the table below will be applied based on the date of the completed withdrawal forms are submitted with all supporting documents attached. Withdrawal requests must be accompanied by information that is reasonably required by ICM. In the case of a cancellation unrelated to a visa rejection, this includes but is not limited to:
 - an unconditional Letter of Acceptance to another institution for post-secondary level study leading to a diploma or degree; or
 - a confirmed airline ticket back to the home country.

All refunds applied for under this Fee Refund Policy will be assessed and paid within four weeks of receiving a completed withdrawal form from the student and containing such information as is reasonably required by ICM and stated above.

icmanitoba.ca/policies-and-procedures
icmanitoba.ca/terms-and-conditions

Notification period

Cancellation policy

STUDY PERMIT REFUSAL (PROOF OF REFUSAL NECESSARY; FOR EXAMPLE, LETTER OF REJECTION FROM THE CANADIAN EMBASSY):

Un-enrolled student providing study permit refusal	C\$500
The enrolled student providing study permit refusal prior to the course drop with no financial penalty deadline	C\$500
The enrolled student providing study permit refusal subsequent to course drop with no financial penalty deadline	Current term tuition and fees (+ a C\$500 administration fee)

NOTIFICATION OF WITHDRAWAL FROM THE PROGRAM ACCOMPANIED BY REQUIRED DOCUMENTATION RECEIVED PRIOR TO COMMENCEMENT OF CLASSES*

More than 10 weeks prior to commencement of classes*	20% of term fees** (+ a C\$500 administration fee)
10 weeks or fewer, prior to commencement of classes*	50% of term fees** (+ a C\$500 administration fee)
On or after commencement of classes* for	
Students in their first term of study	50% of program fees*** (+ a C\$500 administration fee)
Returning students	100% of term fees** (+ a C\$500 administration fee)

WITHDRAWAL FROM A SINGLE COURSE(S)

Weeks 1-3	No penalty; funds remain with ICM and are credited against enrolment in a subsequent term. Fees are forfeited if the student does not re-enrol in a subsequent term.
Weeks 4-14	No refund

STUDENTS WITH PROVINCIAL ATTESTATION LETTER REQUIREMENT

Students who do not receive a Provincial Attestation Letter from ICM after making a deposit	C\$500
Students who have received a Provincial Attestation Letter and subsequently providing a study permit refusal letter	C\$500
Students who hold a Provincial Attestation Letter and withdraw without providing a study permit refusal letter ****	50% of program fees*** (+ a C\$500 administration fee)

*Commencement of classes will be the day of orientation ** Term fees = 4 courses *** Program Fees can be found at www.icmanitoba.ca/fees

**** Effective January 22, 2024, students require a provincial attestation letter to apply for a new study permit

Please note: The cancellation fees listed above refer only to ICM tuition, fees and charges. For cancellation fees relating to airport reception or homestay placement, please contact the relevant third party.





University
of Manitoba

International College of Manitoba

University of Manitoba
Fort Garry Campus
Room 190
Extended Education Complex
406 University Crescent
Winnipeg, Manitoba
Canada R3T 2N2

T +1 204 474 8479
E info@icmanitoba.ca

ICM will provide, upon request, information through a communication support or accessible format. Contact us for more information.

CRA BN 84676 4181

The information contained in this guide is correct at the time of publication. However, the International College of Manitoba (ICM) reserves the right to alter, amend or delete details at any time without notice.

This guide is provided free of charge.

Printed Apr 2024
ICM240425_FAW

 facebook.com/icmanitoba

 [@icmanitoba](https://instagram.com/icmanitoba)

 youtube.com/icmanitoba

icmanitoba.ca