

ICM First Term Course Selection Guide

Updated: August 15, 2025

Welcome to ICM!

This guide contains important information for your First Term. Please read it carefully.

For any questions, reach out to ICM's Student Success Advisors using the [Student Portal](#).

- Online
- In-person at the ICM office
- Email: advisor@learning.icmanitoba.ca

Remember! Use your ICM Email and include your ICM Student ID in all correspondence.

As you navigate towards your first term, you may have some questions about enrolment or your courses, credit hours, etc.

Please download and review the resource from the ICM Website:

[Student Portal Tutorial](#)

[How to Enrol in Courses](#)

[ICM Course Descriptions](#)

Important Academic Documents

- Academic Schedule
- Enrolment Guide
- Frequently Asked Questions
- How to apply to UM
- ICM GPA Calculator
- ICM Student Handbook
- ICM Projected Course List

These documents are updated every semester and are available on your Student Portal> Student Resources> Documents. Please review them at least twice a term.

It is important to select a mixture of required and elective courses to balance your course load for your first term.

The suggested courses in this guide are for the **Fall 2025 term only (September)**.

Foundation (UTP Stage I)	3
Foundation (UTP Stage I) – Mixed Entry	4
International Year One (UTP Stage II)	
• Agricultural and Food Sciences	5
• Arts	6
• Arts (Economics)	7
• Business	8
• Engineering	9
• Environment, Earth, and Resources	10
• Recreation Management and Community Development	11
• Science	12
• Science (Computer Science)	13
• Science (Data Science)	14
International Year One (UTP Stage II)- Mixed Entry	
• Agricultural and Food Sciences	15
• Arts	16
• Arts (Economics)	17
• Business	18
• Engineering	19
• Environment, Earth, and Resources	20
• Recreation Management and Community Development	21
• Science	22
• Science (Computer Science)	23
• Science (Data Science)	24

We don't offer direct pathways, but the Program Planning Guides can be found on the Student Portal:

- Health Studies
- Health Science
- Nursing
- Social Work

Foundation (UTP Stage I)

- ☐ **ILS** (non-credit, no fee)
- ☐ **ESR 100** (English Skills/Reading) **OR ESW 100** (English Skills/Writing)
- ☐ **MTH 099 or MTH 103** (based on Math Placement Test results)
 - **Two** courses from the list below:
 - ☐ BUS 108: Business Management
 - ☐ COM 101: Introduction to Computing
 - ☐ CHM 100: Basic Chemistry
 - ☐ ECN 100: Introduction to Economics
 - ☐ PHY 100: Basic Physics
 - ☐ POL 100: Politics and Society
 - ☐ PSY 101: Foundations of Psychology & Wellness
 - ☐ SOC 105: World Issues
 - ☐ STT 101: Basic Statistics
 - ☐ HIS105: The Story of English

To see the required and recommended courses based on your future pathway, please review the [Foundation \(UTP Stage I\) Program Planning Guide](#)

- To successfully complete the Foundation (UTP Stage I) program, students **must complete ILS and eight (8) Foundation (UTP Stage I) courses**.
- It is recommended that students enrol in *ILS* along with four (4) Foundation (UTP Stage I) courses during their first term.
- JUMP Rule:
 - Students who complete all four courses (in addition to ILS) within a single semester and achieve a minimum grade of *B (70%)* in each course may be eligible for the “Jump Rule” to advance directly into *International Year One (UTP Stage II)*.
 - Students are required to select either ESR or ESW during their first term. Those who qualify for the “Jump Rule” are not obligated to complete the second course.
 - Student who JUMP should consult with a Student Success Advisor to confirm they meet all prerequisite requirements for International Year One (UTP Stage II) and any university-level courses relevant to their intended program of study. For further details, refer to Section 3.1.2 of the ICM Student Handbook available in your Student Portal.

For assistance with program planning, please contact [Student Success Advisors](#).

Foundation (UTP Stage I)- Mixed Entry

Students in a Mixed Entry program will find this indicated on their Letter of Offer under the Conditions section, “*Student is now eligible for our Mixed entry level based on the provided English test result. To successfully enrol in the Mixed Program, you must select AES100.*”

- ☐ **AES 100** Academic English
- ☐ **ILS** (non-credit, no fee)
- ☐ **MTH 099 or MTH 103** (based on Math Placement Test results)
 - Up to **two** additional UTP I courses from the following list below:
 - ☐ BUS 108: Business Management
 - ☐ CHM 100: Basic Chemistry
 - ☐ COM 101: Introduction to Computing
 - ☐ ECN 100: Introduction to Economics
 - ☐ PHY 100: Basic Physics
 - ☐ POL 100: Politics and Society
 - ☐ PSY 101: Foundations of Psychology & Wellness
 - ☐ SOC 105: World Issues
 - ☐ STT 101: Basic Statistics
 - ☐ ESR 100: English Skills/Reading
 - ☐ ESW 100: English Skills/Writing
 - ☐ HIS105: The Story of English

To see the required and recommended courses based on your future pathway, please review the [Foundation \(UTP Stage I\) Program Planning Guide](#)

To successfully complete the Foundation (UTP Stage I) program, students must complete eight (8) Foundation (UTP Stage I) courses, in addition to *AES* and *ILS*. **The Mixed program typically requires three academic terms to complete.**

Students enrolled in the Foundation (UTP Stage I) Mixed Entry program are **not eligible** for the “Jump Rule” during their first term. However, eligibility may be considered in the second term if the following criteria are met:

- Completion of four (4) Foundation (UTP Stage I) courses (excluding *ILS*) within a single semester.
- Achievement of a minimum grade of *B (70%)* in each of the four courses.

Students who meet these requirements should consult with a *Student Advisor* to confirm they satisfy all prerequisite conditions for *International Year One (UTP Stage II)* and any university-level courses relevant to their intended program.

For assistance with program planning, please contact [Student Success Advisors](#).



Agricultural and Food Sciences

- ☐ ILS (non-credit, no fee)
- ☐ ABIZ1000
- ☐ Three recommended credit courses.

Recommended credit courses:

- To select the best courses for your planned major program, you must review the [International Year One \(UTP Stage II\) Program Planning Guide](#) for your ICM program and the [First Year Planning Guide](#).
- The University of Manitoba's [Academic Calendar](#) is also recommended.

Pre-requisite Information:

- If a recommended course isn't listed on your enrolment page and you need clarification, please email register@icmanitoba.ca from your ICM student email.
- You **may not be able to view all courses** on your Student Portal Enrolment screen or may see some courses **blocked**. This may be due to one of the following reasons:
 - You did not complete Grade 12 Math, Chemistry, Physics, or Biology.
 - You scored less than 60% (or equivalent) in grade 12 Math, Chemistry, Physics, or Biology.
 - The course you want to register for requires you to complete a [prerequisite course](#) with ICM.
 - To enrol in PHY100 and/or CHM100, email register@icmanitoba.ca
- Students who **did not** study high school Biology (Grade 12 or 40S equivalent) will be **required** to take **BIOL 1000** prior to taking **BIOL 1020**.
 - Students who complete both BIOL1000 and BIOL1020 are able to count both courses towards their 30 credit hours required to complete ICM. However, when students enter UM faculty, only BIOL1020 will be held for credit as students are not able to hold credit for both BIOL 1000 and BIOL 1020 at UM.

For assistance with program planning, please contact [Student Success Advisors](#).

International Year One (UTP Stage II)

ARTS

- ☐ ILS (non-credit, no fee)
 - Four recommended or required International Year One (UTP Stage II) courses from the following list below:
 - ☐ ANTH 1220: Cultural Anthropology
 - ☐ ECON 1010: Introduction to Microeconomic Principles
 - ☐ ECON 1020: Introduction to Macroeconomic Principles
 - ☐ MATH 1010*: Applied Finite Mathematics – Faculty of Arts only
 - ☐ PSYC 1199: Introduction to Psychology (students must enrol in PSYC 1200 the following term to receive credit for PSYC 1199)
 - ☐ Elective
- You must review UM [First Year Planning Guide](#) regarding your program and [International Year One \(UTP Stage II\) Program Planning Guide](#) for your ICM program.

Regarding MATH(M) Requirement:

- **If your major requires a MATH course**, we recommend that students complete it while at ICM. If it doesn't require a MATH course or you are unsure, please talk to the ICM advisor.
- *MATH1010 has no Grade 12 or Foundation (UTP Stage I) math pre-requisite requirement (MTH099/MTH103). You may take MATH1010 as your math (M) requirement if your planned program at the University of Manitoba (UM) does not have a prerequisite of MATH1300, MATH1500 or STAT1000.
- To check program requirements, please view [UM's Academic Calendar](#).
- Different Arts major programs at UM have different requirements, so there is no one set way to complete the International Year One (UTP Stage II): Arts pathway.

For assistance with program planning, please contact [Student Success Advisors](#).

International Year One (UTP Stage II)

ARTS (Economics)

- ☐ ILS (non-credit, no fee)
- ☐ ECON1010
- ☐ ECON1020
- Two recommended or required International Year One (UTP Stage II) courses from the following list below:
 - ☐ MATH Requirement (MATH1500 or MATH1524)
 - ☐ Elective
- You must review UM [First Year Planning Guide](#) regarding your program and [International Year One \(UTP Stage II\) Program Planning Guide](#) for your ICM program.

Regarding MATH(M) Requirement:

- **If your major requires a MATH course**, we recommend that students complete it while at ICM. If it doesn't require a MATH course or you are unsure, please talk to the ICM advisor.
- To check program requirements, please view [UM's Academic Calendar](#).
- Different Arts major programs at UM have different requirements, so there is no one set way to complete the International Year One (UTP Stage II): Arts pathway.

For assistance with program planning, please contact [Student Success Advisors](#).

International Year One (UTP Stage II)

Business

- ☐ **ILS** (non-credit, no fee)
 - **Four** recommended or required International Year One (UTP Stage II) courses from the following list below:
 - ☐ ECON 1010: Introduction to Microeconomic Principles
 - ☐ ECON 1020: Introduction to Macroeconomic Principles
 - ☐ MATH 1524: Mathematics for Management and Social Sciences
 - ☐ STAT 1000: Basic Statistical Analysis 1 or
 - ☐ A required non-business elective

You must review the [International Year One \(UTP Stage II\) Program Planning Guide](#) for your ICM program.

Students who are **required to take Foundation (UTP Stage I) Math** cannot register in International Year One (UTP Stage II) Math or Statistics courses and may wish to consult a Student Advisor after registering for courses by emailing advisor@learning.icmanitoba.ca.

See the [prerequisites requirements](#).

UM Transition Information:

- Business is a highly competitive faculty. Students should consider a **“Plan B”** in case they are not admitted to the faculty.
- The Asper School of Business has **two intakes** per year, Fall (September) and Winter (January). Each intake has its own application deadline that students must apply by. Admission to the Winter term is only if space is available. If you are starting your ICM program in September or January, you must **select ILS + 4 credit courses in your first term and 4 credit courses in your second term** to be eligible for the upcoming Fall or Winter intake.
- Students applying to the Asper School of Business must complete **24 credit hours, including all required courses (with a minimum C in each) by the end of April** for Fall Term and **End of August for Winter Term** of the year that they are applying for in order to be eligible for admissions under Track 1.
- All ICM students are required to apply via Advanced Entry. You can view more details and the Admission Deadlines [UM Admission Requirements](#).

For assistance with program planning, please contact [Student Success Advisors](#).

International Year One (UTP Stage II)

Engineering

- ☐ **ILS** (non-credit, no fee)
 - **Four** required International Year One (UTP Stage II) courses only from the list below:
 - ☐ CHEM 1100: Introductory Chemistry 1: Atomic and Molecular Structure and Energetics
 - ☐ COMP 1012: Computer Programming for Scientists & Engineers
 - ☐ ENG 1430: Design in Engineering
 - ☐ ENG 1440: Introduction to Electrical and Computer Engineering
 - ☐ ENG 1450: Introduction to Thermal Sciences
 - ☐ MATH 1210: Techniques of Classical and Linear Algebra
 - ☐ MATH 1500: Introduction to Calculus
 - ☐ PHYS 1050: Physics 1: Mechanics
 - ☐ ONE Complementary Elective:
 - ☐ PHIL 1290 – Critical Thinking is the **recommended** complementary studies elective but will only be accessible in your second term, after completing ILS.
 - ☐ ANTH 1220 – Cultural Anthropology
 - ☐ ECON 1010 – Introduction to Microeconomic Principles
 - ☐ ECON 1020 – Introduction to Macroeconomic Principles

You must review the [International Year One \(UTP Stage II\) Program Planning Guide](#) for your ICM program.

- **If you have applied for International Year One (UTP Stage II): Engineering** but have received acceptance to International Year One (UTP Stage II): Science, please review the [Pre-Engineering Planning Guide](#).
- Students who are **required to take Foundation (UTP Stage I) Math** cannot register in International Year One (UTP Stage II) Math or Science courses and may wish to consult a Student Success Advisor after registering for courses. See the [prerequisites requirements](#).

UM Transition

- Engineering is a highly competitive faculty. Students should consider a “Plan B” in case they are not admitted to the faculty.
- This faculty **only has a Fall (September) intake every year**. If you are starting your ICM program in Fall (September), you must select ILS + 4 credit courses in your first term and 4 credit courses in your second term to be eligible for the upcoming September intake. If you are starting your ICM program in January or May, please contact [Student Success Advisors](#) for assistance in planning your progression into the faculty.

International Year One (UTP Stage II)

Environment, Earth, and Resources

- ☐ ILS (non-credit, no fee)
- ☐ **Four** recommended or required International Year One (UTP Stage II) courses.

To select the required courses for your planned major, you must review the [International Year One \(UTP Stage II\) Program Planning Guide](#) and [UM First Year Planning Guide](#).

Pre-requisite Information:

- If a recommended course isn't listed on your enrolment page and you need clarification, please email register@icmanitoba.ca from your ICM student email.
- You **may not be able to view all courses** on your Student Portal Enrolment screen or may see some courses **blocked**. This may be due to one of the following reasons:
 - You did not complete Grade 12 Math, Chemistry, Physics, or Biology.
 - You scored less than 60% (or equivalent) in grade 12 Math, Chemistry, Physics, or Biology.
 - The course you want to register for requires you to complete a [prerequisite course](#) with ICM.
 - To enrol in PHY100 and/or CHM100, email register@icmanitoba.ca
- Students who **did not** study high school Biology (Grade 12 or 40S equivalent) will be **required** to take **BIOL 1000** prior to taking **BIOL 1020**.
 - Students who complete both BIOL1000 and BIOL1020 are able to count both courses towards their 30 credit hours required to complete ICM. However, when students enter UM faculty, only BIOL1020 will be held for credit as students are not able to hold credit for both BIOL 1000 and BIOL 1020 at UM.

For assistance with program planning, please contact [Student Success Advisors](#).

International Year One (UTP Stage II)

Recreation Management and Community Development

- ☐ ILS (non-credit, no fee)
- **Four** recommended or required International Year One (UTP Stage II) courses from the following list below:
 - ☐ STAT 1000 Basic Statistical Analysis 1
 - ☐ KPER 1200 Physical Activity, Health and Wellness
 - ☐ KPER 1400 Concepts of Recreation and Leisure
 - ☐ PSYC 1199* Introduction to Psychology
 - ☐ Elective Course

You must review the [International Year One \(UTP Stage II\) Program Planning Guide](#) and [UM First Year Planning Guide](#) for your ICM program.

- Students who register for PSYC 1199 must enrol in PSYC 1200 the following term with the same instructor to receive credit for PSYC 1199/1200.
- Students who are required to take Foundation (UTP Stage I) Math cannot register in International Year One (UTP Stage II) Math or Science courses and may wish to consult a Student Advisor after registering for courses by emailing advisor@learning.icmanitoba.ca. See the [prerequisites requirements](#).

UM Transition

- **This faculty only has a Fall (September) and a Winter (January) intake every year.** Admission to the Winter term is on a space-available basis only.

For assistance with program planning, please contact [Student Success Advisors](#).

International Year One (UTP Stage II)

Science

- ☐ ILS (non-credit, no fee)
- **Four** recommended or required International Year One (UTP Stage II) courses:
 - ☐ At least one Science Course
 - ☐ At least one Arts Course

To select the required courses for your planned major, you must review the [International Year One \(UTP Stage II\) Program Planning Guide](#) and [UM First Year Planning Guide](#).

Pre-requisite Information:

- Students who are **required to take Foundation (UTP Stage I) Math** cannot register in International Year One (UTP Stage II) Math or Science courses and may wish to consult a Student Success Advisor after registering for courses. See the [prerequisites requirements](#).
- You **may not be able to view all courses** on your Student Portal Enrolment screen or may see some courses **blocked**. This may be due to one of the following reasons:
 - You did not complete Grade 12 Math, Chemistry, Physics, or Biology.
 - You scored less than 60% (or equivalent) in grade 12 Math, Chemistry, Physics, or Biology.
 - The course you want to register for requires you to complete a [prerequisite course](#) with ICM.
 - To enrol in PHY100 and/or CHM100, email register@icmanitoba.ca
- Students who **did not** study high school Biology (Grade 12 or 40S equivalent) will be **required** to take **BIOL 1000** prior to taking **BIOL 1020**.
 - Students who complete both BIOL1000 and BIOL1020 are able to count both courses towards their 30 credit hours required to complete ICM. However, when students enter UM faculty, only BIOL1020 will be held for credit as students are not able to hold credit for both BIOL 1000 and BIOL 1020 at UM.
- **If you have applied for International Year One (UTP Stage II): Engineering** but have received acceptance to International Year One (UTP Stage II): Science, please review the [Pre-Engineering Planning Guide](#).

For assistance with program planning, please contact [Student Success Advisors](#).

International Year One (UTP Stage II)

Science (Computer Science)

- ☐ ILS (non-credit, no fee)
- **Four** recommended or required International Year One (UTP Stage II) courses from the following list below:
 - ☐ MATH 1300 Vector Geometry & Linear Algebra
 - ☐ MATH 1500 Introduction to Calculus
 - ☐ STAT 1150 Introduction to Statistics and Computing*
 - Two elective courses:
 - ☐ Faculty of Arts Elective
 - ☐ Any other elective course

COMP 1500 is a **recommended** elective for this program. It is recommended to take this course in your first term to help you prepare for the upcoming COMP courses.

You must review the [International Year One \(UTP Stage II\) Program Planning Guide](#) and [UM First Year Planning Guide](#).

Pre-requisite Information:

- Students who are **required to take Foundation (UTP Stage I) Math** cannot register in International Year One (UTP Stage II) Math or Science courses and may wish to consult a Student Success Advisor after registering for courses. See the [prerequisites requirements](#).
- You **may not be able to view all courses** on your Student Portal Enrolment screen or may see some courses **blocked**. This may be due to one of the following reasons:
 - You did not complete Grade 12 Math, Chemistry, Physics, or Biology.
 - You scored less than 60% (or equivalent) in grade 12 Math, Chemistry, Physics, or Biology.
 - The course you want to register for requires you to complete a [prerequisite course](#) with ICM.
 - For STAT 1150, please note that students are required to have a 70% in Pre-Calculus mathematics 40S and must also have completed one term at ICM.

For assistance with program planning, please contact [Student Success Advisors](#).

International Year One (UTP Stage II)

Science (Data Science)

- ☐ ILS (non-credit, no fee)
- **Four** recommended or required International Year One (UTP Stage II) courses from the following list below:
 - ☐ MATH 1300 Vector Geometry & Linear Algebra
 - ☐ MATH 1500 Introduction to Calculus
 - ☐ STAT 1150 Introduction to Statistics and Computing*
 - Two elective courses:
 - ☐ Faculty of Arts Elective
 - ☐ Any other elective course

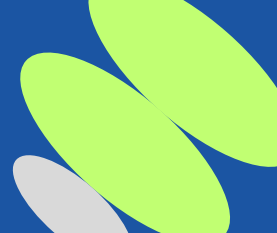
COMP 1500 is a **recommended** elective for this program. It is recommended to take this course in your first term to help you prepare for the upcoming COMP courses.

You must review the [International Year One \(UTP Stage II\) Program Planning Guide](#) and [UM First Year Planning Guide](#).

Pre-requisite Information:

- Students who are **required to take Foundation (UTP Stage I) Math** cannot register in International Year One (UTP Stage II) Math or Science courses and may wish to consult a Student Success Advisor after registering for courses. See the [prerequisites requirements](#).
- You **may not be able to view all courses** on your Student Portal Enrolment screen or may see some courses **blocked**. This may be due to one of the following reasons:
 - You did not complete Grade 12 Math, Chemistry, Physics, or Biology.
 - You scored less than 60% (or equivalent) in grade 12 Math, Chemistry, Physics, or Biology.
 - The course you want to register for requires you to complete a [prerequisite course](#) with ICM.
 - For STAT 1150, please note that students are required to have a 70% in Pre-Calculus mathematics 40S and must also have completed one term at ICM.

For assistance with program planning, please contact [Student Success Advisors](#).



Students in a Mixed Entry program will find this indicated on their Letter of Offer under the Conditions section, “*Student is now eligible for our Mixed entry level based on the provided English test result. To successfully enrol in the Mixed Program, you must select AES100.*”

Agricultural and Food Sciences

- ☐ ILS (non-credit, no fee)
- ☐ **AES 100** Academic English
- ☐ ABIZ1000
- ☐ One recommended credit course.

Recommended credit courses:

- To select the best courses for your planned major program, you must review the [International Year One \(UTP Stage II\) Program Planning Guide](#) for your ICM program and the [First Year Planning Guide](#).
- The University of Manitoba’s [Academic Calendar](#) is also recommended.

Pre-requisite Information:

- If a recommended course isn’t listed on your enrolment page and you need clarification, please email register@icmanitoba.ca from your ICM student email.
- You **may not be able to view all courses** on your Student Portal Enrolment screen or may see some courses **blocked**. This may be due to one of the following reasons:
 - You did not complete Grade 12 Math, Chemistry, Physics, or Biology.
 - You scored less than 60% (or equivalent) in grade 12 Math, Chemistry, Physics, or Biology.
 - The course you want to register for requires you to complete a [prerequisite course](#) with ICM.
 - To enrol in PHY100 and/or CHM100, email register@icmanitoba.ca
- Students who **did not** study high school Biology (Grade 12 or 40S equivalent) will be **required** to take **BIOL 1000** prior to taking **BIOL 1020**.
 - Students who complete both BIOL1000 and BIOL1020 are able to count both courses towards their 30 credit hours required to complete ICM. However, when students enter UM faculty, only BIOL1020 will be held for credit as students are not able to hold credit for both BIOL 1000 and BIOL 1020 at UM.

For assistance with program planning, please contact [Student Success Advisors](#).



Students in a Mixed Entry program will find this indicated on their Letter of Offer under the Conditions section, “*Student is now eligible for our Mixed entry level based on the provided English test result. To successfully enrol in the Mixed Program, you must select AES100.*”

ARTS

- ☐ ILS (non-credit, no fee)
- ☐ **AES 100** Academic English
 - One or Two recommended or required International Year One (UTP Stage II) courses from the following list below:
 - ☐ ANTH 1220: Cultural Anthropology
 - ☐ ECON 1010: Introduction to Microeconomic Principles
 - ☐ ECON 1020: Introduction to Macroeconomic Principles
 - ☐ MATH 1010*: Applied Finite Mathematics – Faculty of Arts only
 - ☐ PSYC 1199: Introduction to Psychology (students must enrol in PSYC 1200 the following term to receive credit for PSYC 1199)
 - ☐ Elective
- You must review UM [First Year Planning Guide](#) regarding your program and [International Year One \(UTP Stage II\) Program Planning Guide](#) for your ICM program.

Regarding MATH(M) Requirement:

- **If your major requires a MATH course**, we recommend that students complete it while at ICM. If it doesn't require a MATH course or you are unsure, please talk to the ICM advisor.
- *MATH1010 has no Grade 12 or Foundation (UTP Stage I) math pre-requisite requirement (MTH099/MTH103). You may take MATH1010 as your math (M) requirement if your planned program at the University of Manitoba (UM) does not have a prerequisite of MATH1300, MATH1500 or STAT1000.
- To check program requirements, please view [UM's Academic Calendar](#).
- Different Arts major programs at UM have different requirements, so there is no one set way to complete the International Year One (UTP Stage II): Arts pathway.

For assistance with program planning, please contact [Student Success Advisors](#).



aStudents in a Mixed Entry program will find this indicated on their Letter of Offer under the Conditions section, “*Student is now eligible for our Mixed entry level based on the provided English test result. To successfully enrol in the Mixed Program, you must select AES100.*”

ARTS (Economics)

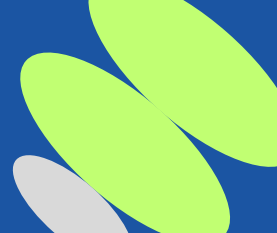
- ☐ ILS (non-credit, no fee)
- ☐ AES100 Academic English
- ☐ ECON1010
- ☐ ECON1020
- or One or Two recommended or required International Year One (UTP Stage II) course from the following list below:
 - ☐ MATH Requirement (MATH1500 or MATH1524)
 - ☐ Elective

- You must review UM [First Year Planning Guide](#) regarding your ICM program and [International Year One \(UTP Stage II\) Program Planning Guide](#) for your ICM program.

Regarding MATH(M) Requirement:

- **If your major requires a MATH course**, we recommend that students complete it while at ICM. If it doesn't require a MATH course or you are unsure, please talk to the ICM advisor.
- To check program requirements, please view [UM's Academic Calendar](#).
- Different Arts major programs at UM have different requirements, so there is no one set way to complete the International Year One (UTP Stage II): Arts pathway.

For assistance with program planning, please contact [Student Success Advisors](#).



Students in a Mixed Entry program will find this indicated on their Letter of Offer under the Conditions section, “*Student is now eligible for our Mixed entry level based on the provided English test result. To successfully enrol in the Mixed Program, you must select AES100.*”

Business

- ☐ **ILS** (non-credit, no fee)
- ☐ **AES 100** Academic English
 - **One or Two** recommended or required International Year One (UTP Stage II) courses from the following list below:
 - ☐ ECON 1010: Introduction to Microeconomic Principles
 - ☐ ECON 1020: Introduction to Macroeconomic Principles
 - ☐ MATH 1524: Mathematics for Management and Social Sciences
 - ☐ STAT 1000: Basic Statistical Analysis 1 or
 - ☐ A required non-business elective

You must review UM [First Year Planning Guide](#) regarding your ICM program and [International Year One \(UTP Stage II\) Program Planning Guide](#) for your ICM program.

Students who are **required to take Foundation (UTP Stage I) Math** cannot register in International Year One (UTP Stage II) Math or Statistics courses and may wish to consult a Student Advisor after registering for courses by emailing advisor@learning.icmanitoba.ca.

See the [prerequisites requirements](#).

UM Transition Information:

- Business is a highly competitive faculty. Students should consider a “**Plan B**” in case they are not admitted to the faculty.
- The Asper School of Business has **two intakes** per year, Fall (September) and Winter (January). Each intake has its own application deadline that students must apply by. Admission to the Winter term is only if space is available. Please contact [Student Success Advisors](#) for assistance in *planning your progression* into the faculty.
- Students applying to the Asper School of Business must complete **24 credit hours, including all required courses (with a minimum C in each) by the end of April** for Fall Term and **End of August** for **Winter Term** of the year that they are applying for in order to be eligible for admissions under Track 1.
- All ICM students are required to apply via Advanced Entry. You can view more details and the Admission Deadlines [UM Admission Requirements](#).

For assistance with program planning, please contact [Student Success Advisors](#).



Students in a Mixed Entry program will find this indicated on their Letter of Offer under the Conditions section, “Student is now eligible for our Mixed entry level based on the provided English test result. To successfully enrol in the Mixed Program, you must select AES100.”

Engineering

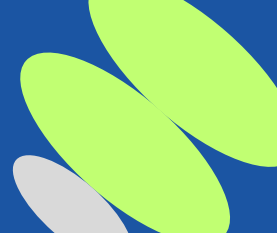
- ☐ **ILS** (non-credit, no fee)
- ☐ **AES 100** Academic English
 - **Two** required International Year One (UTP Stage II) courses only from the list below:
 - ☐ CHEM 1100: Introductory Chemistry 1: Atomic and Molecular Structure and Energetics
 - ☐ COMP 1012: Computer Programming for Scientists & Engineers
 - ☐ ENG 1430: Design in Engineering
 - ☐ ENG 1440: Introduction to Electrical and Computer Engineering
 - ☐ ENG 1450: Introduction to Thermal Sciences
 - ☐ MATH 1210: Techniques of Classical and Linear Algebra
 - ☐ MATH 1500: Introduction to Calculus
 - ☐ PHYS 1050: Physics 1: Mechanics
 - ☐ ONE Complementary Elective:
 - ☐ PHIL 1290 – Critical Thinking is the **recommended** complementary studies elective but will only be accessible in your second term, after completing ILS.
 - ☐ ANTH 1220 – Cultural Anthropology
 - ☐ ECON 1010 – Introduction to Microeconomic Principles
 - ☐ ECON 1020 – Introduction to Macroeconomic Principles

You must review the [International Year One \(UTP Stage II\) Program Planning Guide](#) for your ICM program.

- **If you have applied for International Year One (UTP Stage II): Engineering** but have received acceptance to International Year One (UTP Stage II): Science, please review the [Pre-Engineering Planning Guide](#).
- Students who are **required to take Foundation (UTP Stage I) Math** cannot register in International Year One (UTP Stage II) Math or Science courses and may wish to consult a Student Success Advisor after registering for courses. See the [prerequisites requirements](#).

UM Transition

- Engineering is a highly competitive faculty. Students should consider a “Plan B” in case they are not admitted to the faculty.
- This faculty **only has a Fall (September) intake every year**. Please contact [Student Success Advisors](#) for assistance in *planning your progression* into the faculty.



Students in a Mixed Entry program will find this indicated on their Letter of Offer under the Conditions section, “*Student is now eligible for our Mixed entry level based on the provided English test result. To successfully enrol in the Mixed Program, you must select AES100.*”

Environment, Earth, and Resources

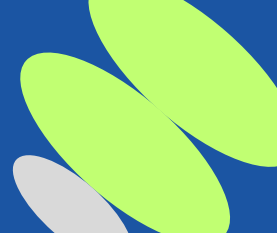
- ☐ ILS (non-credit, no fee)
- ☐ **AES 100** Academic English
- ☐ One or Two recommended or required International Year One (UTP Stage II) courses.

You must review UM [First Year Planning Guide](#) regarding your program and [International Year One \(UTP Stage II\) Program Planning Guide](#) for your ICM program.

Pre-requisite Information:

- If a recommended course isn’t listed on your enrolment page and you need clarification, please email register@icmanitoba.ca from your ICM student email.
- You **may not be able to view all courses** on your Student Portal Enrolment screen or may see some courses **blocked**. This may be due to one of the following reasons:
 - You did not complete Grade 12 Math, Chemistry, Physics, or Biology.
 - You scored less than 60% (or equivalent) in grade 12 Math, Chemistry, Physics, or Biology.
 - The course you want to register for requires you to complete a [prerequisite course](#) with ICM.
 - To enrol in PHY100 and/or CHM100, email register@icmanitoba.ca
- Students who **did not** study high school Biology (Grade 12 or 40S equivalent) will be **required** to take **BIOL 1000** prior to taking **BIOL 1020**.
 - Students who complete both BIOL1000 and BIOL1020 are able to count both courses towards their 30 credit hours required to complete ICM. However, when students enter UM faculty, only BIOL1020 will be held for credit as students are not able to hold credit for both BIOL 1000 and BIOL 1020 at UM.

For assistance with program planning, please contact [Student Success Advisors](#).



Students in a Mixed Entry program will find this indicated on their Letter of Offer under the Conditions section, “*Student is now eligible for our Mixed entry level based on the provided English test result. To successfully enrol in the Mixed Program, you must select AES100.*”

Recreation Management and Community Development

- ☐ ILS (non-credit, no fee)
- ☐ **AES 100** Academic English
 - One or Two recommended or required International Year One (UTP Stage II) courses from the following list below:
 - ☐ STAT 1000 Basic Statistical Analysis 1
 - ☐ KPER 1200 Physical Activity, Health and Wellness
 - ☐ KPER 1400 Concepts of Recreation and Leisure
 - ☐ PSYC 1199* Introduction to Psychology
 - ☐ Elective Course

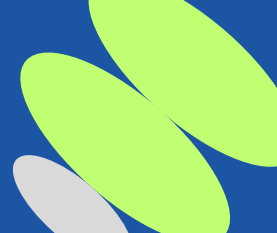
You must review UM [First Year Planning Guide](#) regarding your program and [International Year One \(UTP Stage II\) Program Planning Guide](#) for your ICM program.

- Students who register for PSYC 1199 must enrol in PSYC 1200 the following term with the same instructor to receive credit for PSYC 1199/1200.
- Students who are required to take Foundation (UTP Stage I) Math cannot register in International Year One (UTP Stage II) Math or Science courses and may wish to consult a Student Advisor after registering for courses by emailing advisor@learning.icmanitoba.ca. See the [prerequisites requirements](#).

UM Transition

- **This faculty only has a Fall (September) and a Winter (January) intake every year.** Admission to the Winter term is on a space-available basis only.

For assistance with program planning, please contact [Student Success Advisors](#).



Students in a Mixed Entry program will find this indicated on their Letter of Offer under the Conditions section, “*Student is now eligible for our Mixed entry level based on the provided English test result. To successfully enrol in the Mixed Program, you must select AES100.*”

Science

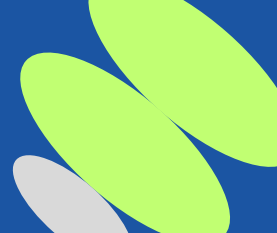
- ☐ ILS (non-credit, no fee)
- ☐ **AES 100** Academic English
- ☐ One or Two recommended or required International Year One (UTP Stage II) courses:
 - ☐ At least one Science Course
 - ☐ At least one Arts Course

You must review UM [First Year Planning Guide](#) regarding your program and [International Year One \(UTP Stage II\) Program Planning Guide](#) for your ICM program.

Pre-requisite Information:

- If a recommended course isn’t listed on your enrolment page and you need clarification, please email register@icmanitoba.ca from your ICM student email.
- You **may not be able to view all courses** on your Student Portal Enrolment screen or may see some courses **blocked**. This may be due to one of the following reasons:
 - You did not complete Grade 12 Math, Chemistry, Physics, or Biology.
 - You scored less than 60% (or equivalent) in grade 12 Math, Chemistry, Physics, or Biology.
 - The course you want to register for requires you to complete a [prerequisite course](#) with ICM.
 - To enrol in PHY100 and/or CHM100, email register@icmanitoba.ca
- Students who **did not** study high school Biology (Grade 12 or 40S equivalent) will be **required** to take **BIOL 1000** prior to taking **BIOL 1020**.
 - Students who complete both BIOL1000 and BIOL1020 are able to count both courses towards their 30 credit hours required to complete ICM. However, when students enter UM faculty, only BIOL1020 will be held for credit as students are not able to hold credit for both BIOL 1000 and BIOL 1020 at UM.
- **If you have applied for International Year One (UTP Stage II): Engineering** but have received acceptance to International Year One (UTP Stage II): Science, please review the [Pre-Engineering Planning Guide](#).

For assistance with program planning, please contact [Student Success Advisors](#).



Students in a Mixed Entry program will find this indicated on their Letter of Offer under the Conditions section, “*Student is now eligible for our Mixed entry level based on the provided English test result. To successfully enrol in the Mixed Program, you must select AES100.*”

Science (Computer Science)

- ☐ ILS (non-credit, no fee)
- ☐ **AES 100** Academic English
 - One or Two recommended or required International Year One (UTP Stage II) courses from the following list below:
 - ☐ MATH 1300 Vector Geometry & Linear Algebra
 - ☐ MATH 1500 Introduction to Calculus
 - ☐ STAT 1150 Introduction to Statistics and Computing*
 - Two elective courses:
 - ☐ Faculty of Arts Elective
 - ☐ Any other elective course

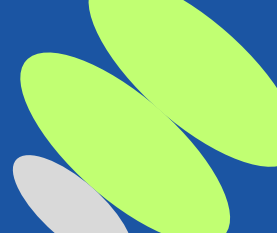
COMP 1500 is a **recommended** elective for this program. It is recommended to take this course in your first term to help you prepare for the upcoming COMP courses.

You must review UM [First Year Planning Guide](#) regarding your program and [International Year One \(UTP Stage II\) Program Planning Guide](#) for your ICM program.

Pre-requisite Information:

- Students who are **required to take Foundation (UTP Stage I) Math** cannot register in International Year One (UTP Stage II) Math or Science courses and may wish to consult a Student Success Advisor after registering for courses. See the [prerequisites requirements](#).
- You **may not be able to view all courses** on your Student Portal Enrolment screen or may see some courses **blocked**. This may be due to one of the following reasons:
 - You did not complete Grade 12 Math, Chemistry, Physics, or Biology.
 - You scored less than 60% (or equivalent) in grade 12 Math, Chemistry, Physics, or Biology.
 - The course you want to register for requires you to complete a [prerequisite course](#) with ICM.
 - For STAT 1150, please note that students are required to have a 70% in Pre-Calculus mathematics 40S and must also have completed one term at ICM.

For assistance with program planning, please contact [Student Success Advisors](#).



Students in a Mixed Entry program will find this indicated on their Letter of Offer under the Conditions section, “*Student is now eligible for our Mixed entry level based on the provided English test result. To successfully enrol in the Mixed Program, you must select AES100.*”

Science (Data Science)

- ☐ ILS (non-credit, no fee)
- ☐ **AES 100** Academic English
 - One or Two recommended or required International Year One (UTP Stage II) courses from the following list below:
 - ☐ MATH 1300 Vector Geometry & Linear Algebra
 - ☐ MATH 1500 Introduction to Calculus
 - ☐ STAT 1150 Introduction to Statistics and Computing*
 - Two elective courses:
 - ☐ Faculty of Arts Elective
 - ☐ Any other elective course

COMP 1500 is a **recommended** elective for this program. It is recommended to take this course in your first term to help you prepare for the upcoming COMP courses.

You must review UM [First Year Planning Guide](#) regarding your program and [International Year One \(UTP Stage II\) Program Planning Guide](#) for your ICM program.

Pre-requisite Information:

- Students who are **required to take Foundation (UTP Stage I) Math** cannot register in International Year One (UTP Stage II) Math or Science courses and may wish to consult a Student Success Advisor after registering for courses. See the [prerequisites requirements](#).
- You **may not be able to view all courses** on your Student Portal Enrolment screen or may see some courses **blocked**. This may be due to one of the following reasons:
 - You did not complete Grade 12 Math, Chemistry, Physics, or Biology.
 - You scored less than 60% (or equivalent) in grade 12 Math, Chemistry, Physics, or Biology.
 - The course you want to register for requires you to complete a [prerequisite course](#) with ICM.
 - For STAT 1150, please note that students are required to have a 70% in Pre-Calculus mathematics 40S and must also have completed one term at ICM.

For assistance with program planning, please contact [Student Success Advisors](#).